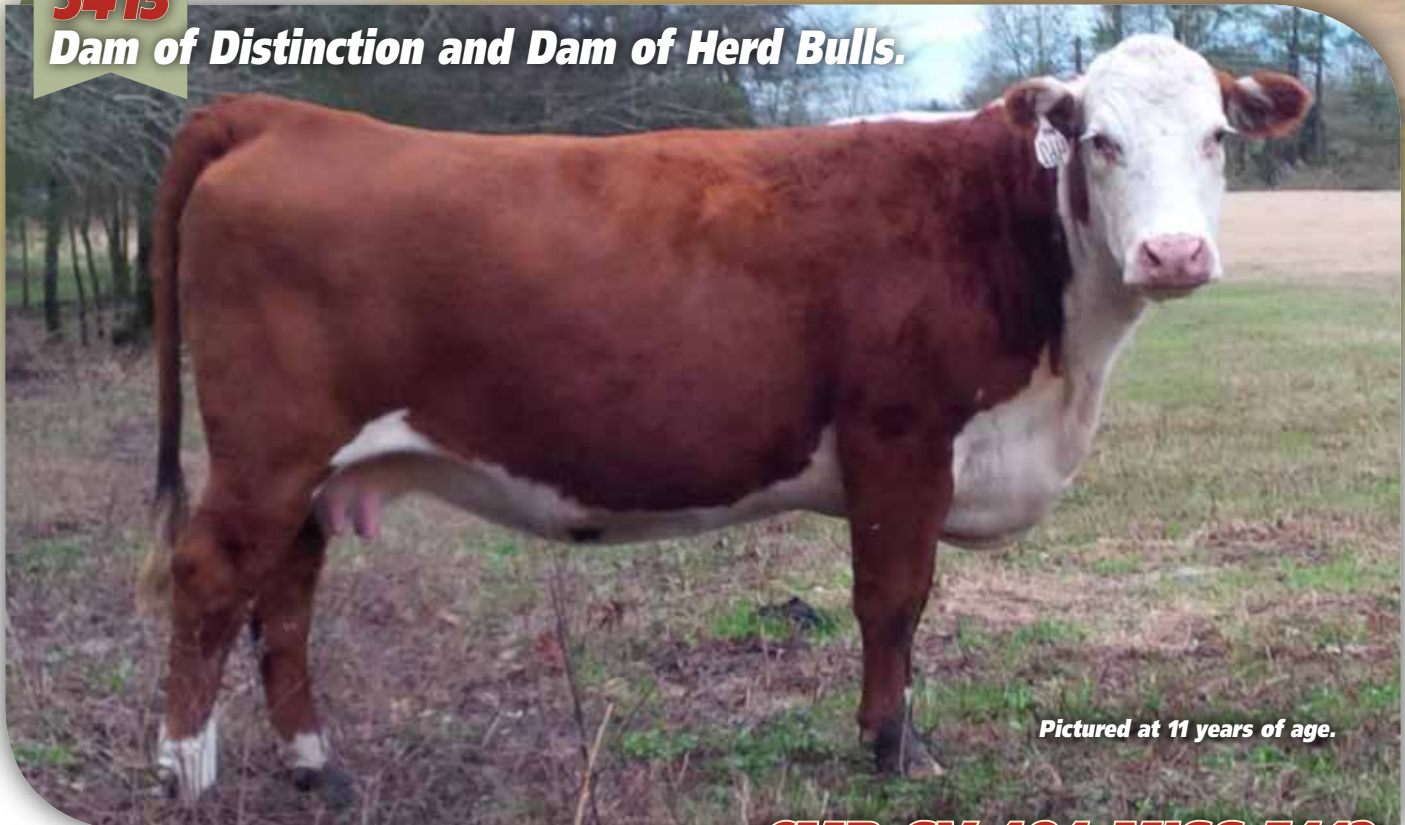


Back to The Future

Built on Four Decades
of Focused Genetic Advancement

5413

Dam of Distinction and Dam of Herd Bulls.



Pictured at 11 years of age.

CMR GV 484 MISS 5413 DOD

Calved: 03/20/2005 Cow P42777047 Tattoo: 5413

| CEU | BW | WW | YW | Milk | M&G | MCE | MCW | Uddr | Teat | SC | CW | FAT | REA | MARB | BMIS | CEZ\$ | BIIS | CHBS |
|------|------|-----|-----|------|-----|------|-----|-------|-------|------|-----|--------|-------|-------|-------|-------|-------|-------|
| +2.8 | +1.8 | +41 | +69 | +28 | +48 | +1.5 | +90 | +1.18 | +1.22 | +0.4 | +58 | +0.020 | -0.17 | +0.22 | +\$13 | +\$16 | +\$10 | +\$21 |

| | | |
|----------------------------|-------------------------|-------------------------|
| LI DOMINO 890061 | LI DOMINO 870130 | LI DOMINO 830577 |
| CL 1 DOMINO 484 S00 | LI DOMINETTE 850625 | LI DOMINETTE 810186 |
| 19427523 | HH ADVANCE S436 | LI DOMINO 820603 |
| CL 1 DOMINETTE 761 | CL 1 DOMINETTE 3033 | LI DOMINETTE 78560 |
| | KCF VICTOR 08N X4 S00 | HH ADVANCE P224 |
| JW X4 VICTOR 306 | JW P36 VICTORIA 644 D00 | HH MISS ADVANCE N146 |
| JW 306 VICTORIA 505 | PW 2105 VICTOR U4 S00 | LI DOMINO 810645 |
| P23897930 | PW N63 VICTORIA R49 D00 | CL 1 DOMINETTE 1024 |
| PW U4 VICTORIA Y35 | | SKYWALKER D103 08N S00 |
| | | KCF MISS 469R U27 D00 |
| | | PW H54 VICTOR P36 |
| | | JW VICTORIA K90 439 |
| | | RHF VICTOR 767 2105 S00 |
| | | PW F243 VICTORIA K69 |
| | | PW 4J VICTOR N63 |
| | | PW G08 VICTORIA N24 |

- Bred and owned by Joe A Waggoner LLC
- 5413 epitomizes our 40 year breeding program of using Line 1 and Victor Domino genetics.
- The genetics of the famed KCF Bennett Encore Z311 trace to 5413's dam JW 306 Victoria 505.
- Breeding interest and possession in sons being offered.



JDH
JDH MARKETING SERVICES LLC
Jack D. Hedrick
 (904) 613-4261
 jdhd@cableone.net



Joe Waggoner, LLC
 2096 Pilgrim Rest Rd. • Carthage, MS 39051
 Joe Waggoner, Owner • (601) 572-4111
 Rusty Sumner • (601) 750-4985



Home of Hyalite TS Lass 310, dam of Hyalite On Target 936.

Breeding interest and possession in sons of **5413** being offered.

SCHU-LAR ON TARGET 22S 500
HYALITE ON TARGET 936
 P42986803 HYALITE TS LASS 310

CL 1 DOMINO 484 500
CMR GV 484 MISS 5413 000
 P42777047 JW 306 VICTORIA 505

SCHU-LAR 5N OF 9L 3008 500
 SCHU-LAR 208 OF 1H 121 ET 000
 KT TOP SECRET 1030 500
 HYALITE 215F LASS 812 000

L1 DOMINO 890061
 CL 1 DOMINETTE 761
 JW X4 VICTOR 306
 PW U4 VICTORIA Y35



HYALITE ON TARGET 936

| CED | BW | WW | YW | Milk | M&G | MCE | MCW | Uddr | Teat |
|------|------|--------|-------|-------|-------|-------|-------|-------|-------|
| +4.7 | +3.4 | +72 | +115 | +30 | +66 | +4.3 | +98 | +1.42 | +1.35 |
| SC | CW | FAT | REA | MARB | BMI\$ | CEZ\$ | BI\$ | CHB\$ | |
| +1.8 | +77 | +0.024 | +0.57 | +0.15 | +\$28 | +\$20 | +\$22 | +\$37 | |

Calved: 03/21/2009 Bull P42986803 Tattoo: 936

- Sire of 1677, 1678, 1679 and 16136.
- The dam of Hyalite On Target 936. Hyalite TS Lass 310 is a donor dam in our program.



1677

JW 936 TARGET 1677 ET

Calved: 11/01/2015 Bull 43636938 Tattoo: 1677

| CED | BW | WW | YW | Milk | M&G | MCE | MCW | Uddr | Teat | SC | CW | FAT | REA | MARB | BMI\$ | CEZ\$ | BI\$ | CHB\$ |
|------|------|-----|-----|------|-----|------|-----|-------|-------|------|-----|--------|-------|-------|-------|-------|-------|-------|
| +3.7 | +2.3 | +56 | +91 | +28 | +56 | +2.9 | +96 | +1.30 | +1.29 | +1.2 | +68 | +0.018 | +0.24 | +0.20 | +\$22 | +\$18 | +\$17 | +\$29 |

- Act BW 77; 205 Adj WW 795.
- DNA tested Homozygous Polled.
- Offering 2/3 Interest with full possession.

JW 936 TARGET 1678 ET

Calved: 11/01/2015 Bull P43636937 Tattoo: 1678

| CED | BW | WW | YW | Milk | M&G | MCE | MCW | Uddr | Teat | SC | CW | FAT | REA | MARB | BMI\$ | CEZ\$ | BI\$ | CHB\$ |
|------|------|-----|-----|------|-----|------|------|-------|-------|------|-----|--------|-------|-------|-------|-------|-------|-------|
| +3.7 | +2.6 | +56 | +94 | +26 | +54 | +2.9 | +104 | +1.30 | +1.29 | +1.2 | +66 | +0.008 | +0.21 | +0.17 | +\$22 | +\$18 | +\$18 | +\$29 |

- Act BW N/A; 205 Adj WW 627.
- Offering 2/3 Interest with full possession.



1678

JW 936 TARGET 1679 ET

Calved: 11/01/2015 Bull P43636936 Tattoo: 1679

| CED | BW | WW | YW | Milk | M&G | MCE | MCW | Uddr | Teat | SC | CW | FAT | REA | MARB | BMI\$ | CEZ\$ | BI\$ | CHB\$ |
|------|------|-----|-----|------|-----|------|------|-------|-------|------|-----|--------|-------|-------|-------|-------|-------|-------|
| +3.7 | +2.1 | +55 | +94 | +28 | +55 | +2.9 | +101 | +1.30 | +1.29 | +1.1 | +65 | +0.031 | +0.12 | +0.23 | +\$20 | +\$18 | +\$16 | +\$28 |

- Act BW N/A; 205 Adj WW 644.
- Offering 1/2 Interest with spring possession.



1679

JW 936 TARGET 16136

Calved: 12/16/2015 Bull P43649922 Tattoo: 16136

| CED | BW | WW | YW | Milk | M&G | MCE | MCW | Uddr | Teat | SC | CW | FAT | REA | MARB | BMI\$ | CEZ\$ | BI\$ | CHB\$ |
|------|------|-----|-----|------|-----|------|------|-------|-------|------|-----|--------|-------|-------|-------|-------|-------|-------|
| +3.6 | +3.0 | +61 | +99 | +28 | +59 | +2.7 | +105 | +1.30 | +1.29 | +1.1 | +70 | +0.014 | +0.26 | +0.21 | +\$21 | +\$18 | +\$16 | +\$32 |

- Act BW 83; 205 Adj WW 650.
- Natural calf out of 5413.
- Offering 1/2 Interest with spring possession.



16136

Give Us a Call!

Select groups of females and ET calves available to offer you.

Joe Waggoner (601) 572-4111

Jack D. Hedrick (904) 613-4261

